



#### GREE ELECTRIC APPLIANCES, INC. OF ZHUHAI

Add: West Jinji Rd, Qianshan, Zhuhai, Guangdong, China 519070  
Tel: (+86-756) 852 2218 Fax: (+86-756) 866 9426  
Email: gree@gree.com.cn Http://www.gree.com

#### HONG KONG GREE ELECTRIC APPLIANCES SALES LIMITED

Add: Unit 2612, 26/F., Miramar Tower 132 Nathan Road, TST, Kowloon, HK  
Tel: (852) 3165 8898 Fax: (852) 3165 1029

#### Note:

Gree is committed to continuously improving its products to ensure the highest quality and reliability standards, and to meet local regulations and market requirements.

All features and specifications are subject to change without prior notice.

All images provided in this catalogue are used for illustration purposes only.  
Copyright© Gree Electric Appliances, Inc. of Zhuhai. All rights reserved.

GC-1409-01



Distributor information

**GREE**  
AIR CONDITIONER

# COMMERCIAL AIR CONDITIONERS

2015





# LIGHT COMMERCIAL AC

## U-Match

The U-Match series is a kind of split type air conditioner that the outdoor unit can be connected to different types of indoor units, which can meet various indoor decoration requirements for residential and light commercial locations. The product series are as below:

- **U-Match Super Inverter Series:** The Inverter type U-Match is with high efficiency design and environmental friendly refrigerant (R410A).
- **U-Match Fixed Frequency Series:** The Fixed Frequency type U-Match with economic cost, satisfies different outdoor conditions and power supply requirements.

Outdoor Units (R410A/R22, 50/60Hz)



R410A/R22, 50/60Hz  
9,000~60,000BTU/h

Indoor Units (R410A/R22, 50/60Hz)



Floor Ceiling  
9,000~60,000BTU/h

Cassette  
12,000~60,000BTU/h

Duct Type  
9,000~60,000BTU/h

## Top Discharge Condensing Unit & Indoor Units

This is a kind of split type air conditioner with top discharge type outdoor unit which can be connected to different types of indoor units, which to meet various indoor decoration requirements for residential house. The product series are as below:

- **Inverter Series:** Adopt with Inverter compressor and Micro Channel Heat Exchanger provides high efficiency (18SEER) and comfort.
- **Fixed Frequency Series:** Comes with lower cost and reliable operating, the efficiency is 13SEER/14SEER (R410A).

Outdoor Unit



R410A, 18SEER, Inverter  
24,000~48,000BTU/h

R410A, 13/10SEER  
18,000~60,000BTU/h

Indoors Units



Floor Ceiling  
10SEER



Air Handler  
10/13/18SEER

# LIGHT COMMERCIAL AC

## Duct Type Split Unit

This is a kind of duct type split air conditioner with higher capacity for commercial locations.

Outdoor Unit



Indoor Unit



R410A, 50Hz: 20~40kW (5.7~11.4RT)  
R22, 50Hz/60Hz: 20~60kW (5.7~17.1RT)

## Rooftop Packaged Unit

It's a kind of air-cooled packaged air conditioner which can be easily installed and maintained. There are two series of products as below:

- **14 SEER Series:** Small capacity and high efficiency Micro Channel Heat Exchanger, as well as R410A refrigerant.
- **Normal Efficiency Series:** Wider range from 3RT to 30RT and R22 as refrigerant standard, capable of operating under tropical condition.

14 SEER Series



R410A, 50Hz: 10.5~17.5kW (3~5RT)

Normal Efficiency Series



R22, 50Hz: 10.5~105kW (3~30RT)  
R22, 60Hz: 14~87.5kW (4~25RT)

## Water-cooled Packaged Unit

With water-cooled shell and tube condenser, the water cooled packaged air conditioning unit is favored for its compact packaged design and high energy efficiency, of which reliability, transportability is highly approved. The capacity range is from 16kW to 196kW that can be widely installed in the commercial buildings.



R410A, 60Hz  
16~70kW (5~20RT)



R22, 50Hz  
32~196kW (9~56RT)

The GMV Series is the VRF system that adopts variable capacity compressor and multiple indoor units to realize independent cooling or heating in different rooms. The product series are as below:

- **GMV Mini:** Side air discharge type Inverter VRF for residential houses (3.5~6HP).
- **GMV IV:** The modular type Inverter VRF for large buildings (8~64HP).
- **HOME GMV:** The perfect integration of Inverter VRF and ATW Heat Pump for residential houses (3.5~10HP).
- **GMV HR-II:** The latest modular type Inverter VRF with simultaneous cooling and heating function (8~64HP).
- **GMV5 Mini:** Side air discharge type Inverter VRF for residential houses (4~6HP).
- **GMV 5:** The latest DC Inverter Multi VRF System with its high-efficient inverter compressor for large buidlings.(8-88HP)

### Outdoor Units (R410A, 50Hz/60Hz)



10~16kW(3.5~6HP)  
GMV Mini



22.4~28kW (8~10HP)



33.5~45kW (12~16HP)

GMV IV



10~16kW (3.5~6HP)



22.4~28kW (8~10HP)

Home-GMV



22.4~28kW (8~10HP)



33.5~45kW (12~16HP)

GMV HR-II



12~16kW(4~6HP)  
GMV5 Mini



22.4~45kW(8~16HP)

GMV5



50.4~61.5kW(18~22HP)\*



\*This product is under development. The parameters are estimated, please refer to the value on the nameplate.

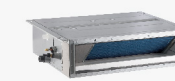
### Indoor Units



High ESP Duct  
5.6~28kW



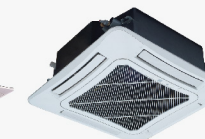
Low ESP Duct  
2.2~14kW



Slim Duct  
2.2~7.2kW



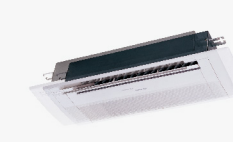
4-way Cassette  
2.8~16kW



Compact 4-way Cassette  
2.2~5.0kW



2-way Cassette  
2.8~7.1kW



1-way Cassette  
2.2~5.0kW



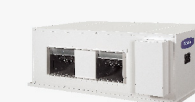
Wall Mounted  
2.2~7.1kW



Floor Ceiling  
2.8~14kW



Console  
2.2~5.0kW



Fresh Air Processing  
14~45kW



Floor Standing  
10~14kW



Air Handler  
7.1~14kW

### Hydro System (for HOME GMV only)



Hydro Box  
5~30kW



Water Tank  
200~400L



# FREE MATCH & SPECIAL AC

## Free Match III

It's a kind of DC Inverter multi-split air conditioner that consisted with one outdoor unit and up to five indoor units.

Outdoor Unit



R410A, 50/60Hz  
14,000~42,000BTU/h

Indoor Unit



Wall Mounted 7,000~24,000BTU/h  
Slim Duct 9,000~24,000BTU/h  
4-way Cassette 12,000 ~24,000BTU/h  
Floor Ceiling 9,000~24,000BTU/h  
Console 9,000~18,000BTU/h

## Super Free Match

Capacity range from 12kW to 16kW can be widely used in residential house, hotel, business office and especially applicable in variable loading situation.

Outdoor Unit



R410A, 50/60Hz  
42,000~56,000BTU/h

Indoor Unit



Wall Mounted 7,000~24,000BTU/h  
Slim Duct 9,000~24,000BTU/h  
4-way Cassette 12,000 ~24,000BTU/h  
Floor Ceiling 9,000~24,000BTU/h  
Console 9,000~18,000BTU/h

## Close Control Air Conditioner

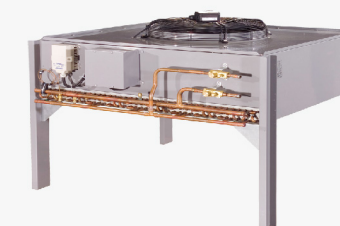
Air-cooled unitary air conditioner for precise air temperature and humidity control, which is widely used in computing equipment rooms, laboratories and precise processing industries, etc.

Indoor Unit



R22/R410A, 50Hz  
5~40kW

Outdoor Unit



R22/R410A, 50Hz  
5~40kW

## Marine Air Conditioner

The marine air conditioner is specially designed for small vessels such as yachts and fishing boats.



R410A, 50Hz/60Hz  
5,000~16,000BTU/h



# CHILLER

## Centrifugal Chiller

High efficient water-cooled centrifugal chiller for large commercial buildings, of which compressor is designed & manufactured by GREE.



R134a, 50Hz  
1400~7200kW (398~2044RT)

## Water-cooled Screw Chiller

High efficient water-cooled screw chiller with twin-screw compressor & flooded type evaporator for large commercial buildings.



R22, 50Hz  
190~1960kW (54~485RT)  
R134a, 50Hz  
180~1500kW (52~364RT)

## Water-cooled Scroll Chiller

Water-cooled chiller equipped with high performance scroll compressor for commercial buildings.



R22, 50Hz  
75~150kW (21~43RT)



## Air-cooled Screw Chiller

Air-cooled chiller with twin screw compressor and modular design, which can satisfy the cooling and heating requirement of commercial buildings.



R22, 50Hz  
270~1060kW (77~301RT)  
R134a, 50Hz  
220~880kW (63~250RT)  
R134a, 60Hz  
with Heat Recovery Function  
230~430kW (65~122RT)

## Air-cooled Scroll Chiller

Air-cooled chiller with scroll compressor and modular design, which can satisfy the cooling and heating requirement of commercial buildings.



R22/R410A, 50Hz  
61~145kW (17~41RT)



R410A, 60Hz  
65~160kW (18.5~45.5RT)

## Mini Chiller

Mini size of air-cooled chiller with scroll compressor for residential and light commercial buildings.

### Split type



R22/R410A, 50Hz  
7.5~14kW

### Modular/Integral type



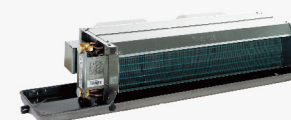
R22/R410A, 50Hz  
19~56kW

# TERMINAL

## Fan Coil Unit

Various types of chilled water fan coil units can satisfy different requirements of indoor decoration and building requirements.

### Concealed Ceiling Type



200~2000CFM

### Cassette Type



471~1200CFM

### Floor Ceiling Type



235~1200CFM

### Wall Mounted Type



212~588CFM

## Air Handling Unit

With high capacity and high air flow volume, the chilled water air handling unit can satisfy the air treatment from basic requirement to precise processing.

### Horizontal Mounted Packaged Type



B Series  
881~4696CFM



E Series  
881~7049CFM

### Vertical Packaged Type



1762~17623CFM

### Modular Type

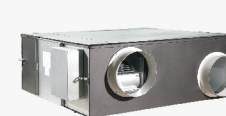


660~20293CFM

## Ventilation

The ventilation equipments in HVAC projects such as Energy Recovery Ventilation, Air Curtain, Air Grille & Diffusers.

### ERV



120~1760CFM

### Air Curtain

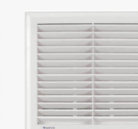


700~970CFM

### Air Grille & Diffusers



Adjustable Grille



Return Air Grille



Square Diffuser

# AIR TO WATER

## Versati

Versati is a multifunctional Air to Water Heating System with inverter compressor and R410A refrigerant, it can highly satisfy the requirement of residential sanitary hot water and air conditioning by connecting to water tank and chilled water fan coil units.

Outdoor Unit



Hydro Unit



Water Tank



## Air to Water Heat Pump Water Heater

The Air Source Water Heater can heat up the water by operating heat pump and absorbing the heat from the outdoor air, for sanitary hot water supplying.

Ultra Series



Integral Type



Circulating Type



Modular Circulating Type



Direct Heating Circulating Type

